

CERTIFICATE OF LOCATION OF GOVERNMENT CORNER

NORTHEAST Corner of Section 24, Township 105 N., Range 39 W., 5th P.M.

STATE OF MINNESOTA, County of MURRAY

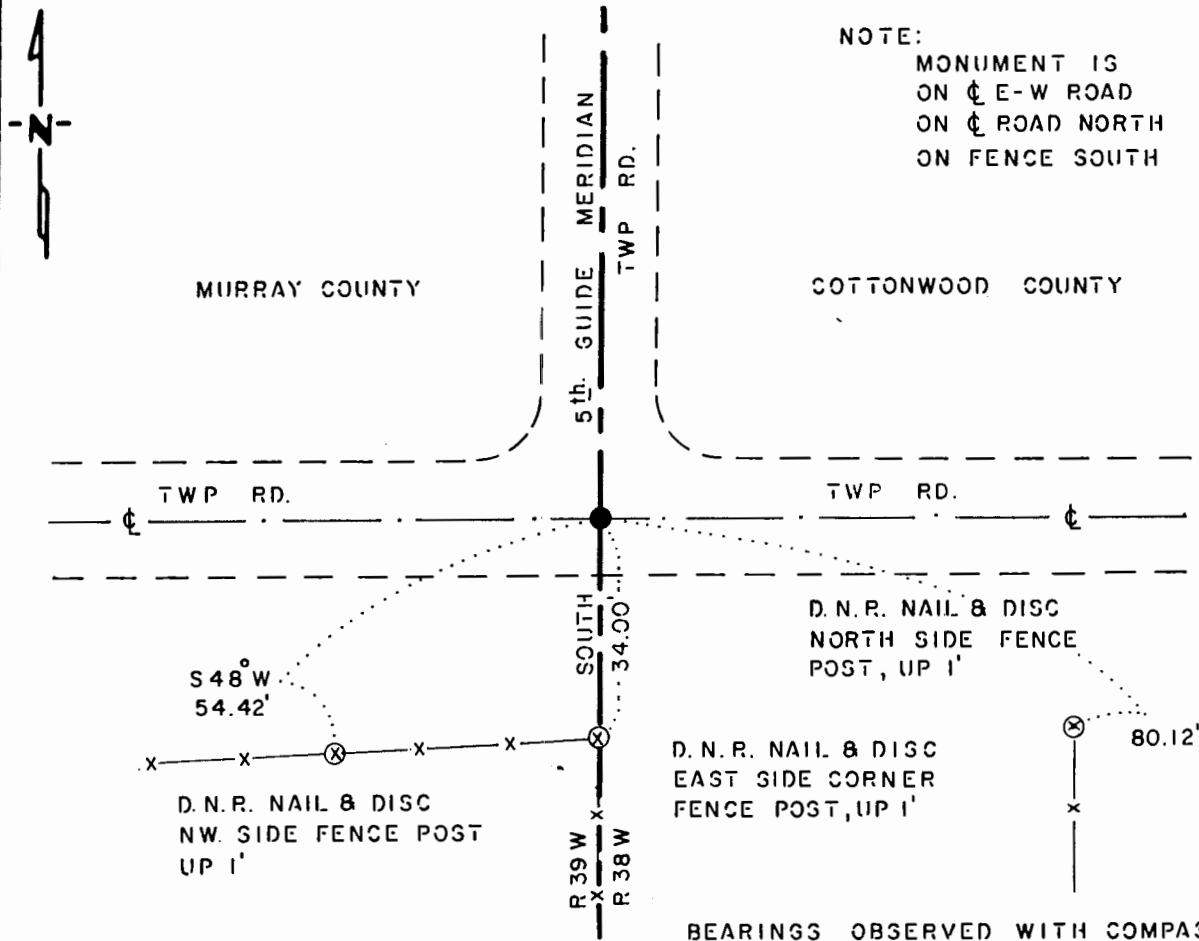
At the corner location shown on the sketch:

On 5-12-83 found a 2 1/2" x 2 1/2" x 30" IRON BAR, DOWN 16"
DATE

left monument as found, lowered monument, removed monument (explain)

On 5-12-83 placed a 1 1/4" x 1 1/4" x 10 1/2" PERFORATED STEEL TUBE WITH
DATE
ALUMINUM CAP STAMPED "D. N. R. SURVEY MARKER" OVER IRON, DOWN 0.3'

SKETCH OF REFERENCE TIES



BEARINGS OBSERVED WITH COMPASS

Statement of evidence relative to this corner location is on back of page.

J. B. M. 7-24-85
G-158

I hereby certify that this document and the data contained herein was prepared by me or under my direct supervision.

Bruce W. Sheppard 12/20/85
SIGNATURE DATE

Registration No. 17003

- Land Surveyor, Professional Engineer
- County Surveyor, County Engineer

OFFICE OF THE COUNTY RECORDER

County of _____

I hereby certify that this document was filed in the Co. Recorders office at _____ .M. on the _____ day of _____ A.D., 19 _____

County Recorder _____

By _____, Deputy

DOCUMENT NO. _____

Northeast Corner Section 24, Township 105 North, Range 39 West

This corner was originally established by the U. S. General Land Office survey in 1857. The government notes show:

set post, deposited charcoal, made mound trench, and pits and planted plum seed northeast and southwest

In April 1983, the DNR Bureau of Engineering contacted the following for corner information:

Cottonwood County Offices of the Recorder and Highway Engineer
Murray County Offices of the Recorder and Highway Engineer
Sioux Engineering of Windom
Martin Land Surveying of Worthington

The following information was obtained from the Cottonwood County Recorder's Office:

Plat 49 contains a resurvey of Township 105 North, Range 38 West done by C. W. Gove, County Surveyor, in 1898. Plat shows that an old corner was found and a 2½" by 2½" by 30" cast iron stake was set.

The following information was obtained from the Office of Sioux Engineering:

A copy of a resurvey plat of Township 105 North, Range 38 West, obtained from Howard Boeck of Westbrook, and done by C. W. Gove, County Surveyor, in 1898, shows a government stake at corner.

The following information was obtained from the Cottonwood County Recorder's Office:

A resurvey plat of Township 105 North, Range 38 West, done by C. W. Gove, County Surveyor, in 1898, shows a government stake at corner.

The following information was obtained from the DNR Bureau of Engineering's Office:

In 1952, a government brass disc was found at corner.

In May 1983, the DNR Bureau of Engineering traversed to the area of the corner and found a 2½" by 2½" by 30" long iron bar.

Accept the iron bar as the location of the corner.

Traverse information is available from the DNR Bureau of Engineering.

66hab